



watch



automobile



aerospace



medical



industry

**PCM**<sup>®</sup>  
*be driven.*

# TOOL HOLDERS STAR MICRONICS.



**Made in Switzerland**  
since 1969



## PCM PRECISION TOOLING SA

For more than 50 years, PCM Precision Tooling SA has been one of the world's leading manufacturers of special tool holders for CNC sliding headstock lathes. All our products are developed and manufactured in Switzerland and carry the «Swiss Made» label, which stands for precision, quality and reliability.

Our company is located in the center of French-speaking Switzerland, on the shores of Lake Geneva, near Montreux. Our international network of distributors ensures a continuous after-sales service. We also offer training courses that we adapt to the individual needs of our to the individual needs of our customers.

Our highly trained staff ensures the best quality and service of our products and our products, and keeps our customers ahead of the competition as we work closely with machine builders and industry partners.

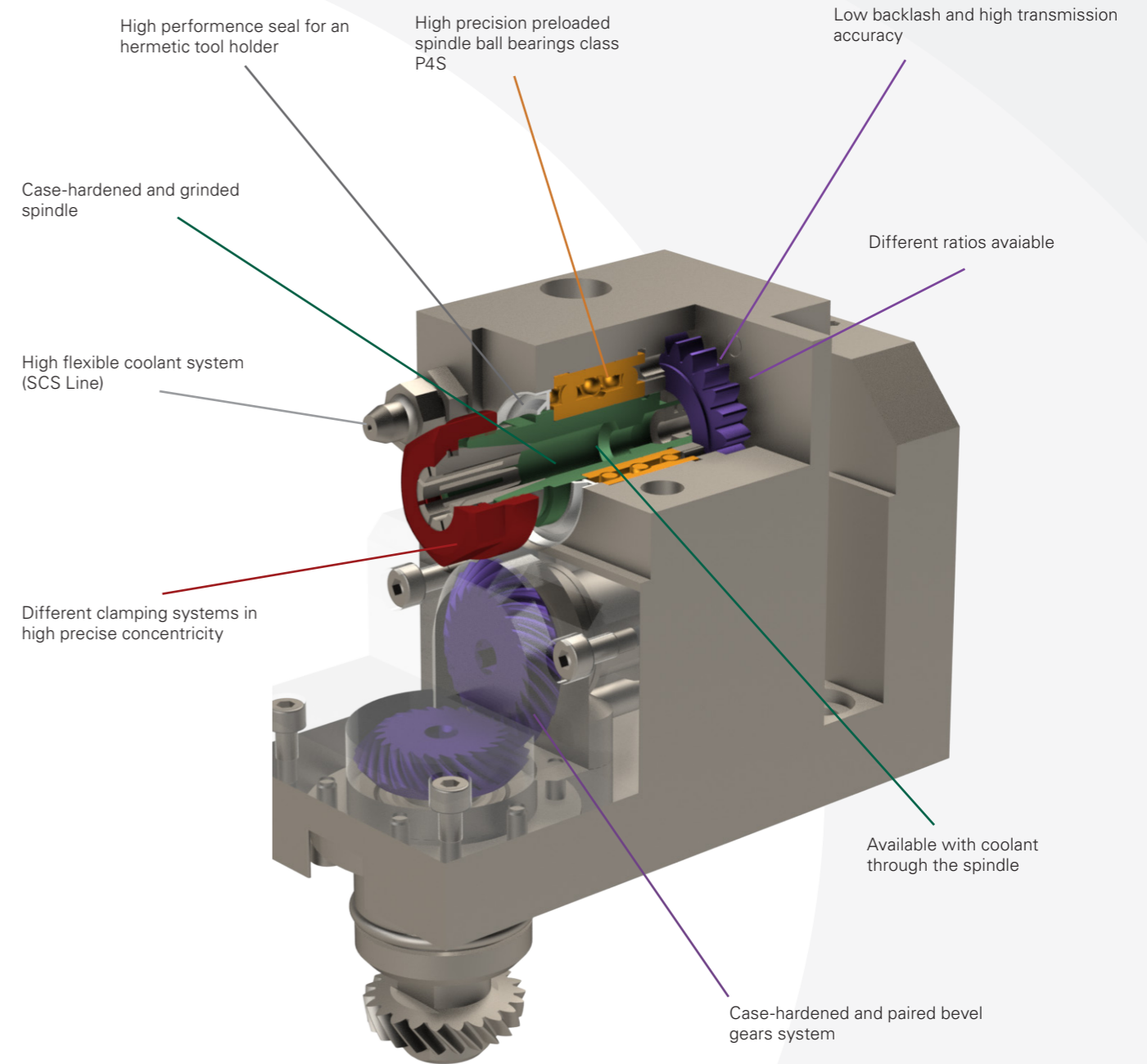
We are constantly committed to innovation and progress because our number one priority is the satisfaction of our customers.

We also focus on after-sales service for all our toolholders to performance of your tools in the long term through repairs of all types, including those of all types and also those not produced by us.



## YOUR CHOICE N°1 IN TOOLING SYSTEMS

- Long service life ←
- Very gentle transmission even at high speed operation ←
- 100% tested ←
- Customised tool available ←



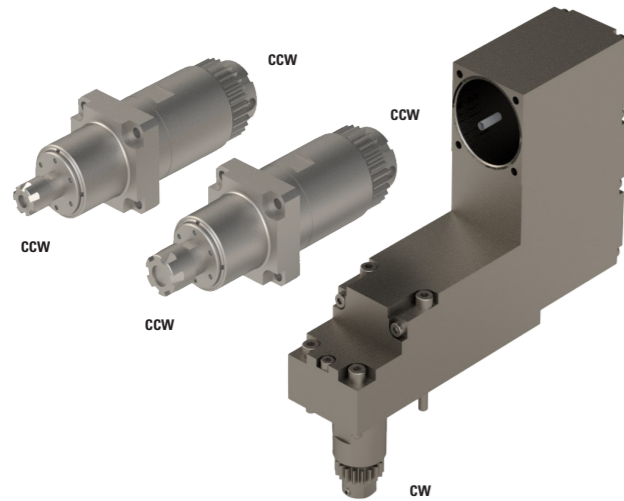
## STAR MICRONICS


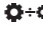
Radial tool	5
Axial tools	13
Accelerated tools	23
Slitting saw tools	31
Polygon/Threading tools	35
Hobbing tools	41
Whirling tools	51
Statics tools	59

Rotation: **cw** Clockwise    **ccw** Counterclockwise  
 Cooling: **INT** Interior    **EXT** Exterior    **⊖** Without

## RADIAL TOOLS STAR MICRONICS.

### 0200-AD000-R00000-1S01



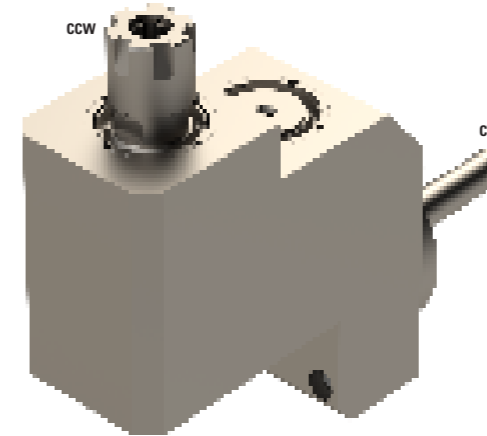
	Ø34 m:1 z:30
	1:1
<b>Position</b>	Upper gang tool post
<b>Machines Types</b>	SR-20R-II SR-20J SR-32J SR-38 SW-12R SW-20R



#### Notes

RADIAL TOOL HOLDER BASE  
Optional compatible tool holders (not included):  
- SB20-RSC05-4x (axial tool holder ER08 accelerated 4x)  
- SB20-RSC07-4x (axial tool holder ER11 accelerated 4x)



### 0200-SC011-R00000-1S01



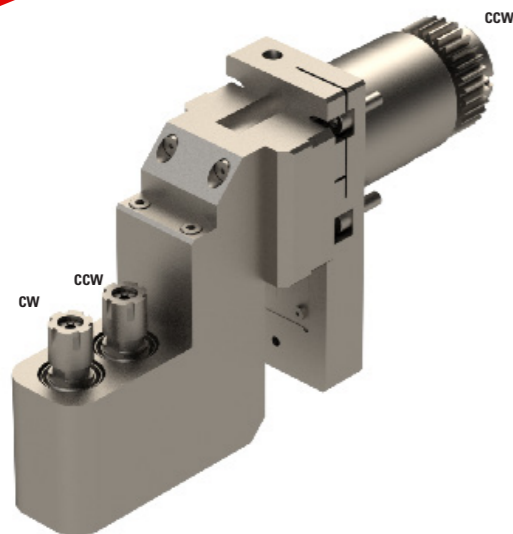
	ER11
	1:1
<b>Position</b>	Back gang tool post
<b>Machines Types</b>	SR10J
<b>Notes</b>	



This tool can only be used with the STAR bases 0200-BU000-01 or 0200-BU000-02.



### 0200-SC008-RA000C-2S01

**MODULAR  
SYSTEM**



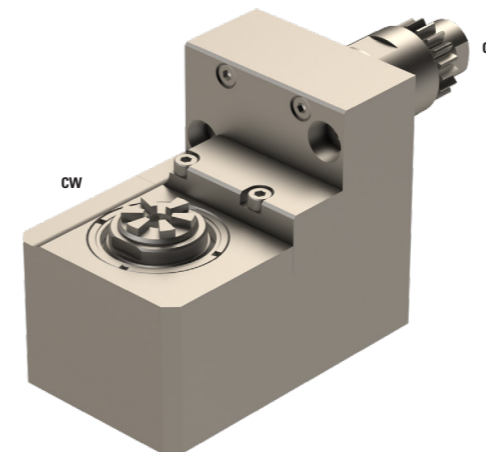
	2xER08
	1:1
<b>Position</b>	Upper gang tool post
<b>Machines Types</b>	SB-12/16/20R SR-20R SR-20J SR-32J



#### Notes

The STAR2-PCR base and GSE208 head are together on this tool.  
Possibility to order them individually.



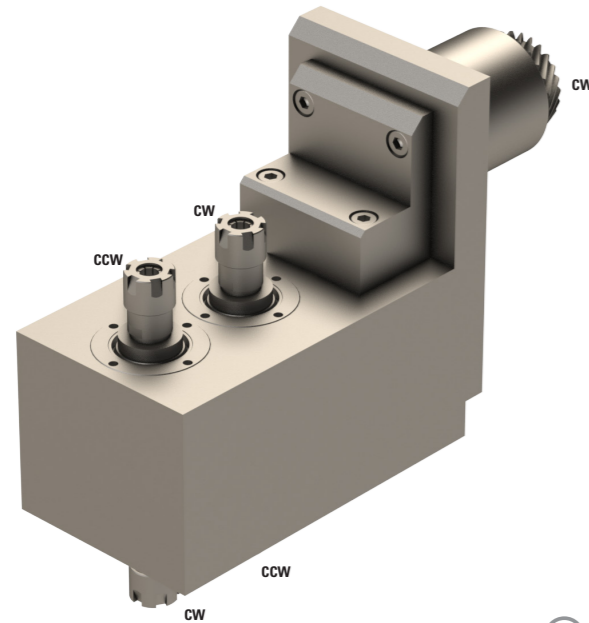
### 0200-SC011-R00000-1S02


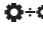


	ER11
	1:1
<b>Position</b>	Upper gang tool post
<b>Machines Types</b>	SR-20JN SR-20RIII SR-20RII
<b>Notes</b>	

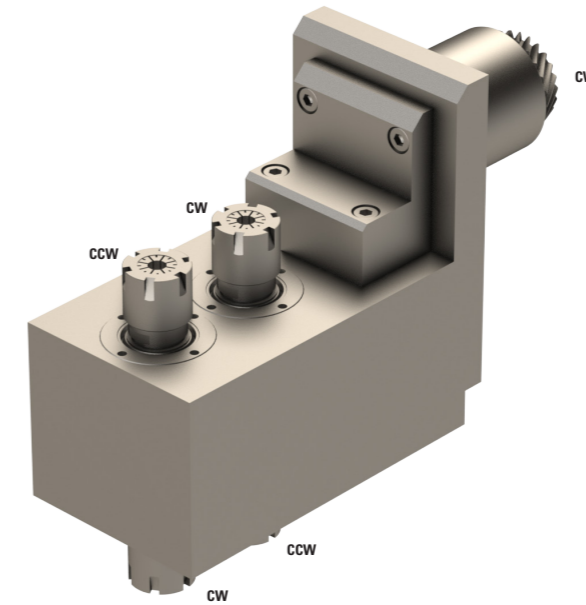




### 0200-SC011-R00000-2D01



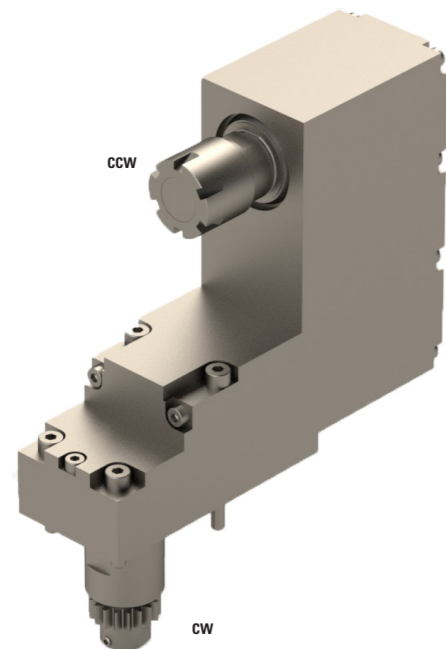
	2xER11+2xER11
	1:1
<b>Position</b>	Turret
<b>Machines Types</b>	ECAS 20T ST-20 SV-12/20 SV-20 R
<b>Notes</b>	


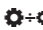
### 0200-SC016-R00000-2D01



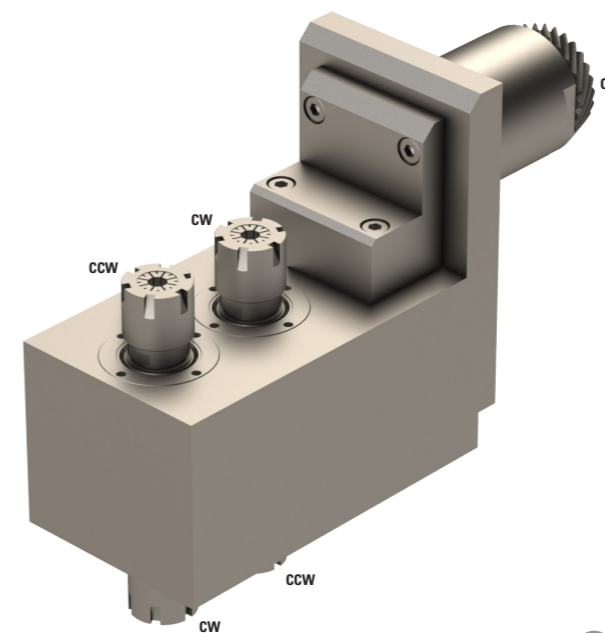
	2xER16+2xER16
	1:1
<b>Position</b>	Turret
<b>Machines Types</b>	ECAS 20T ST-20 SV-12/20 SV-20 R
<b>Notes</b>	

### 0200-SC016-R00000-1S01



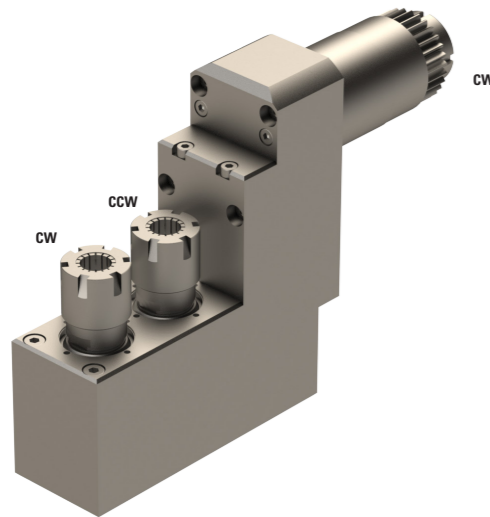
	ER16
	1:1
<b>Position</b>	Back tool post
<b>Machines Types</b>	SR-20R-II SR-20J SR-32J SR-38 SW-12R SW-20R
<b>Notes</b>	


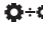
### 0200-SC016-R00000-2D02



	2xER16+2xER16
	1:1
<b>Position</b>	Turret
<b>Machines Types</b>	SV32
<b>Notes</b>	

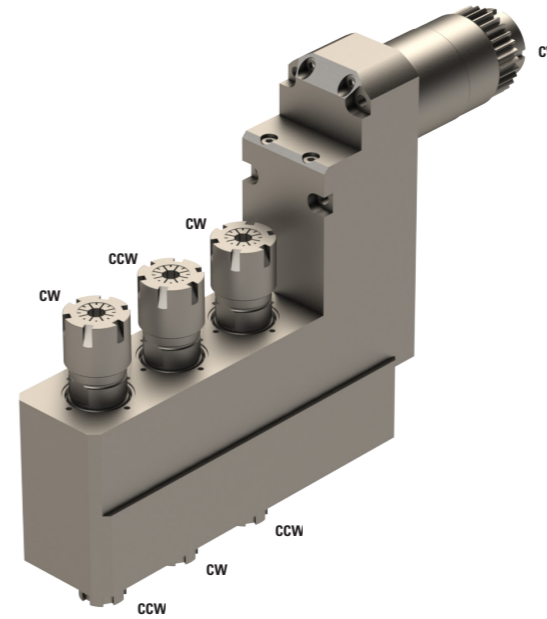
### 0200-SC016-R00000-2S01





	2xER16
	1:1
Position	Back gang tool post
Machines Types	SB-12/20R SR-20J/JN SR-20RIII SR-20RII SR-20RIV
Notes	



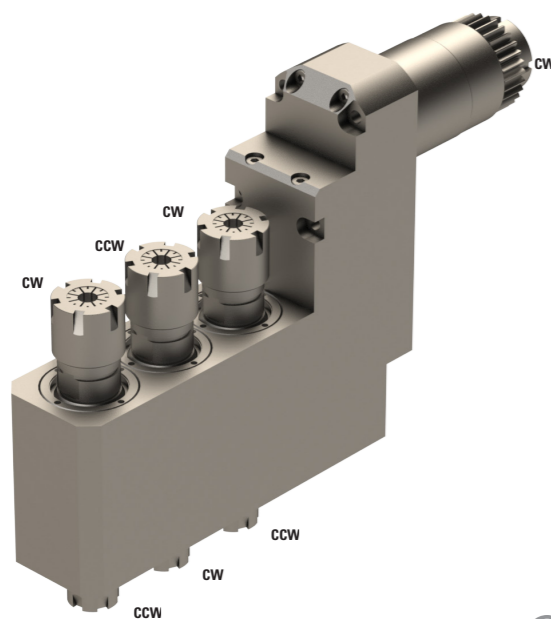
### 0200-SC016-R00000-3D02





	3xER16+3xER11
	1:1
Position	Back gang tool post
Machines Types	SR-20J/JN SR-20JII-A SR-20JII-B SR-20RIV R-32J/JN SR-32 JII-B/JIII-B
Notes	



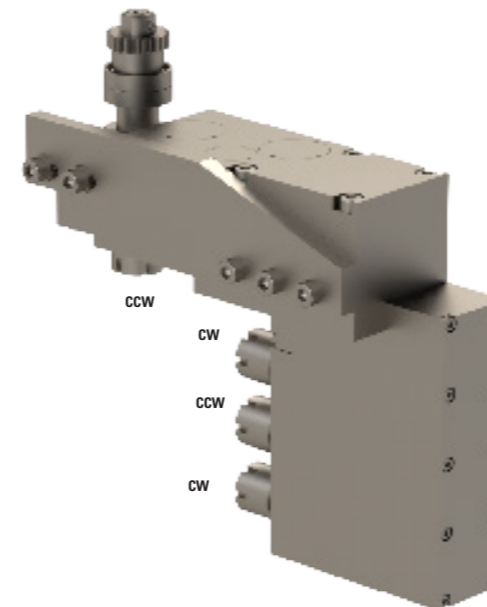
### 0200-SC016-R00000-3D01





	3xER16+3xER11
	1:1
Position	Back gang tool post
Machines Types	SB-12 SB-20R SR-20J SR-20JN SR-20RIII SR-20RII SR-20RIV
Notes	



### 0200-SC016-R00000-4S01



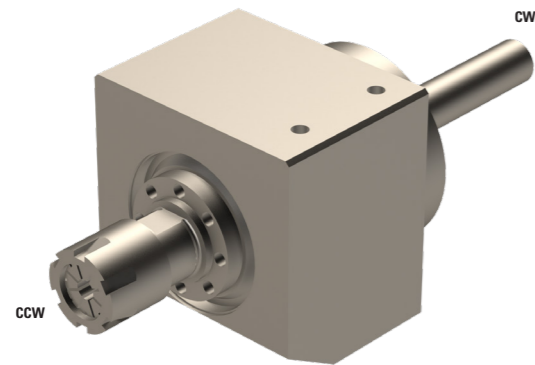
	4xER16
	1:1
Position	Back gang tool post
Machines Types	SB-20J TYPE C
Notes	




To be mounted on the OM152 unit. Position 34 must be removed. The OM112 unit must be removed.

# AXIAL TOOLS STAR MICRONICS.

### 0200-SC008-A00000-1S01



	ER08
---	------

	1:1
---	-----

<b>Position</b>	Back gang tool post
-----------------	---------------------

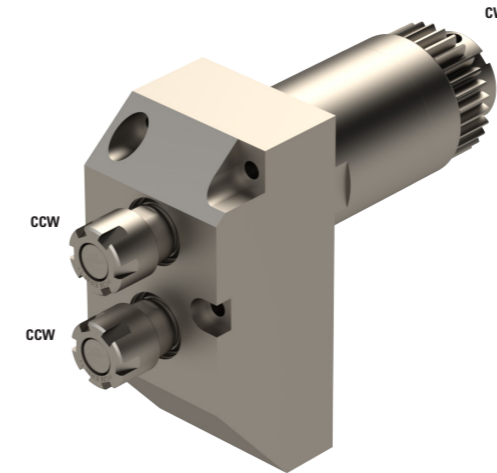
<b>Machines Types</b>	SR10J
-----------------------	-------


**Notes:**


This tool can only be used with the STAR bases 0200-BU000-01 or 0200-BU000-02.



### 0200-SC011-A00000-2S02



	2xER11
---	--------

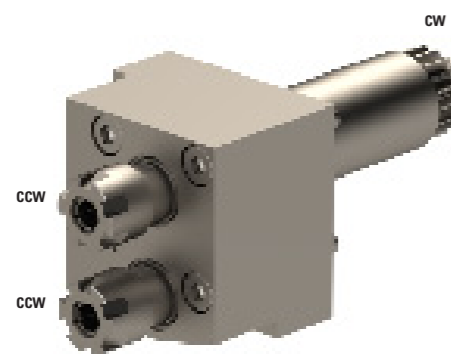
	1:1
---	-----


<b>Position</b>	Upper gang tool post
-----------------	----------------------

<b>Machines Types</b>	SB-20RG
-----------------------	---------

**Notes**


### 0200-SC011-A00000-2S01



	2xER11
---	--------

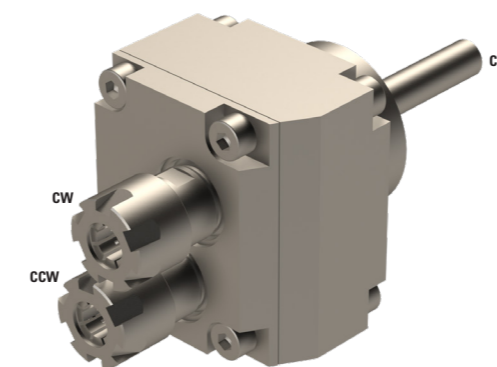
	1:1
---	-----


<b>Position</b>	Upper gang tool post
-----------------	----------------------

<b>Machines Types</b>	SW-12
-----------------------	-------

**Notes**


### 0200-SC011-A0D000-2S01



	2xER11
---	--------

	1:1
---	-----

<b>Position</b>	Back gang tool post
-----------------	---------------------

<b>Machines Types</b>	SR10J
-----------------------	-------

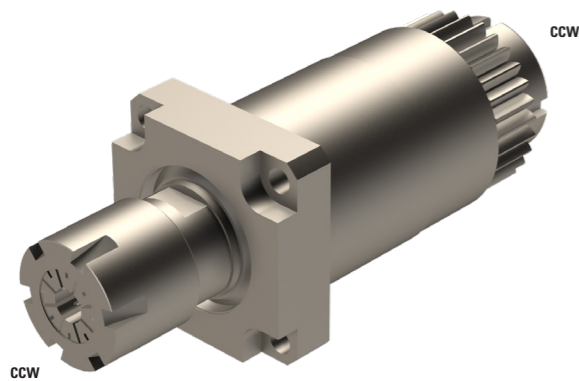
**Notes**



Offset second spindle : 4mm / 16.5mm  
This tool can only be used with the STAR bases 0200-BU000-01 or 0200-BU000-02





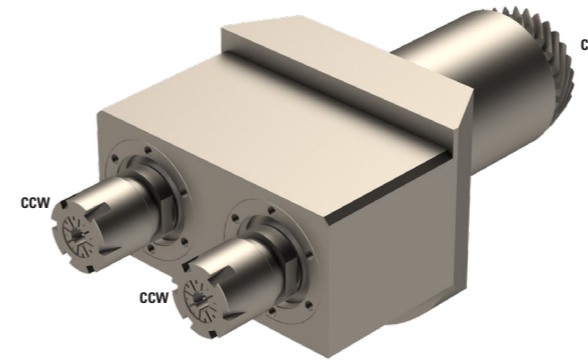
## 0200-SC016-A00000-1S01



	ER16
	1:1
<b>Position</b>	Upper gang tool post
<b>Machines Types</b>	ECAS-12 ECAS-20 SR-20J SR-20JN SR-20RIII SR-20RII SR-20RIV SR-32J SR-32JN SV-12 SV-20 SV-32 SV-32JII SW-20
<b>Notes</b>	



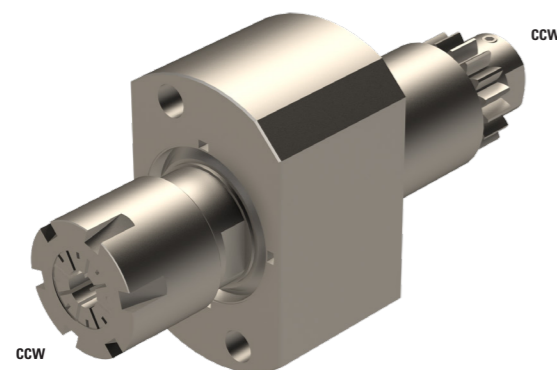
## 0200-SC016-A00000-2S01





	2xER16
	1:1
<b>Position</b>	Turret
<b>Machines Types</b>	SV-32
<b>Notes</b>	



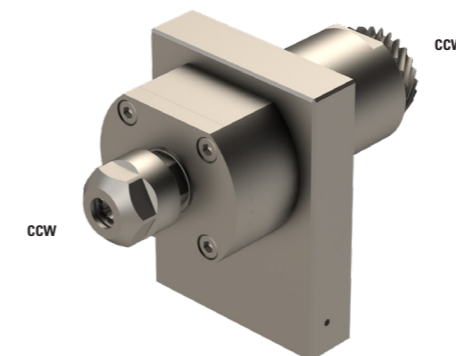
## 0200-SC016-A00000-1S02





	ER16
	1:1
<b>Position</b>	Back tool post
<b>Machines Types</b>	SB-12/20R SR20J/JN SR20RIII SR20RII SR20RIV SR32J/JN SR32J II SV12 SV20 SV32 SV32JII SV-38R SW20
<b>Notes</b>	



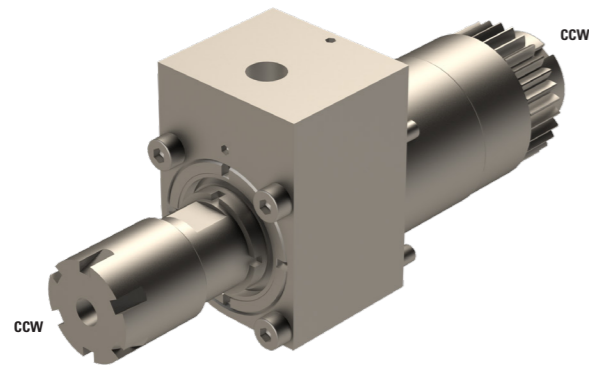
## 0200-SC016-A000H0-1S01





	ER16
	1:1
<b>Position</b>	Upper gang tool post
<b>Machines Types</b>	ECAS-20T ST-20 SV-20 SV-20R
<b>Notes</b>	



## 0200-SC016-A000HO-1S02



	ER11														
	1:1														
<b>Position</b>	Back gang tool post														
<b>Machines Types</b>	<table border="0"> <tr> <td>SB-12/20R</td> <td>SV-12</td> </tr> <tr> <td>SR-20J/JN</td> <td>SV-20</td> </tr> <tr> <td>SR-20RIII</td> <td>SV-32</td> </tr> <tr> <td>SR-20RII</td> <td>SV-32JII</td> </tr> <tr> <td>SR-20RIV</td> <td>SV-38R</td> </tr> <tr> <td>SR-32J/JN</td> <td>SW-20</td> </tr> <tr> <td>SR-32JII</td> <td></td> </tr> </table>	SB-12/20R	SV-12	SR-20J/JN	SV-20	SR-20RIII	SV-32	SR-20RII	SV-32JII	SR-20RIV	SV-38R	SR-32J/JN	SW-20	SR-32JII	
SB-12/20R	SV-12														
SR-20J/JN	SV-20														
SR-20RIII	SV-32														
SR-20RII	SV-32JII														
SR-20RIV	SV-38R														
SR-32J/JN	SW-20														
SR-32JII															

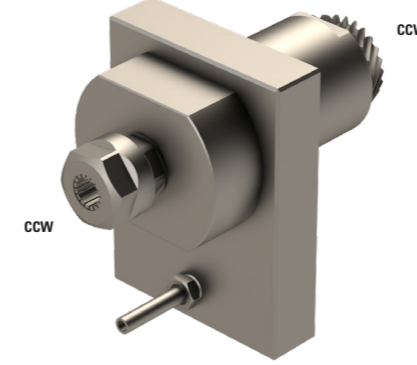
**Notes**



Maximum 80 [bar]  
There is a need for an oil filtered at 50µm.

Delivered with a 610 mm long hose. Other lengths from 100 mm to 900 mm can be ordered on request.



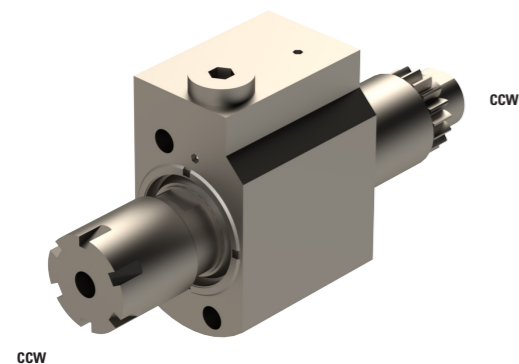
## 0200-SC016-A000KO-1S01





	ER16				
	1:1				
<b>Position</b>	Upper gang tool post				
<b>Machines Types</b>	<table border="0"> <tr> <td>ECAS 20T</td> </tr> <tr> <td>ST-20</td> </tr> <tr> <td>SV-12/20</td> </tr> <tr> <td>SV-20 R</td> </tr> </table>	ECAS 20T	ST-20	SV-12/20	SV-20 R
ECAS 20T					
ST-20					
SV-12/20					
SV-20 R					
<b>Notes</b>	RPM : 5'750				



## 0200-SC016-A000HO-1S04



	ER16								
	1:1								
<b>Position</b>	Back tool post								
<b>Machines Types</b>	<table border="0"> <tr> <td>SB-12/20R</td> <td>SV-20R</td> </tr> <tr> <td>SR-20RIV</td> <td>SW-12RII</td> </tr> <tr> <td>SR-32JII</td> <td>SW-20</td> </tr> <tr> <td>SR-38</td> <td></td> </tr> </table>	SB-12/20R	SV-20R	SR-20RIV	SW-12RII	SR-32JII	SW-20	SR-38	
SB-12/20R	SV-20R								
SR-20RIV	SW-12RII								
SR-32JII	SW-20								
SR-38									

**Notes**

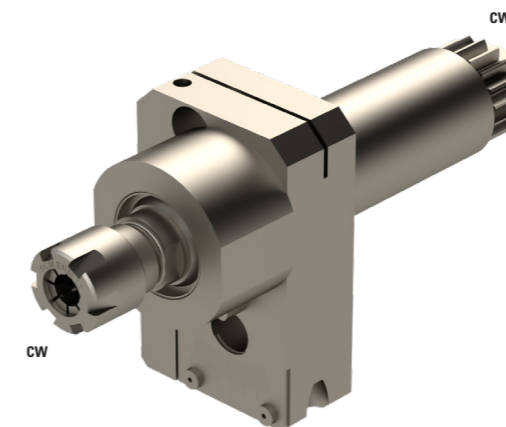
Intern, max 150 bar  
There is a need for an oil filtered at 50µm.



The high pressure flexible tubes are not delivered.  
Tapping for high pressure flexible tube: 1/8».

Possibility of ordering a high pressure flexible tube L:300 mm.  
Article: «NA-CA-01-00» and «Kit d'arrosage 010» and «Kit d'arrosage 047»  
Input: 1/8»(M)  
Output: 1/8»(M)  
Pression max = 200 [bar]



## STAR1-GSC007

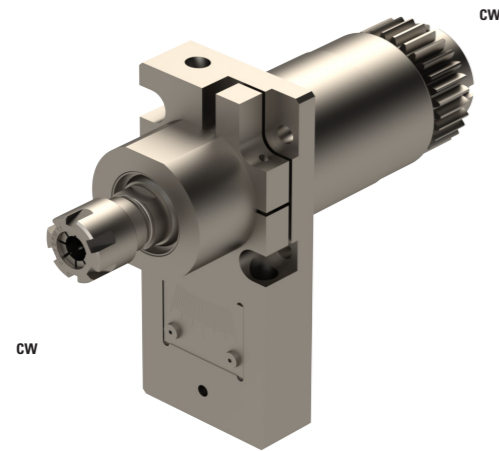
	ER11
	1:1
<b>Position</b>	Back gang tool post Front gang tool post
<b>Machines Types</b>	SW12-R II
<b>Notes</b>	



The STAR1-PCR base and GSC007 head are together on this tool.  
Possibility to order them individually.



### STAR2-GSC007

MODULAR  
SYSTEM



	ER11
	1:1
<b>Position</b>	Back gang tool post
<b>Machines Types</b>	SB-12 SB-16 SB-20R SR-20R SR-20J SR-32J

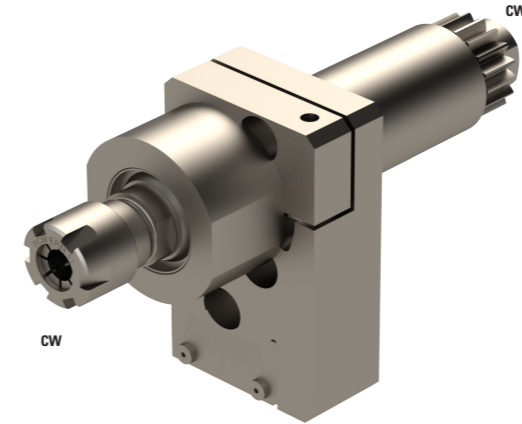
#### Notes



The STAR2-PCR base and GSC007 head are together on this tool.  
Possibility to order them individually.



### STAR4-GSC007

MODULAR  
SYSTEM



	ER11
	1:1
<b>Position</b>	Back tool post
<b>Machines Types</b>	SL-7 / SL-10

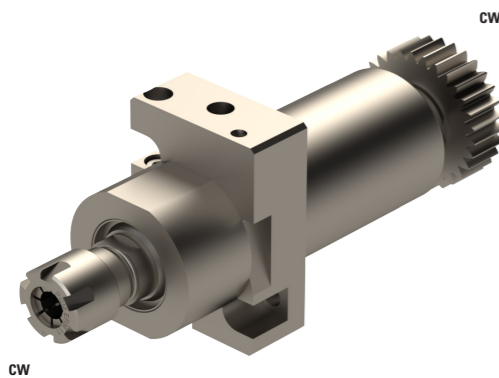
#### Notes



The STAR4-PCR base and GSC007 head are together on this tool.  
Possibility to order them individually.



### STAR3-GSC007

MODULAR  
SYSTEM



	ER11
	1:1
<b>Position</b>	Back tool post
<b>Machines Types</b>	SB-12 SB-20 SR-20J SR-32J SW-12 SW-20

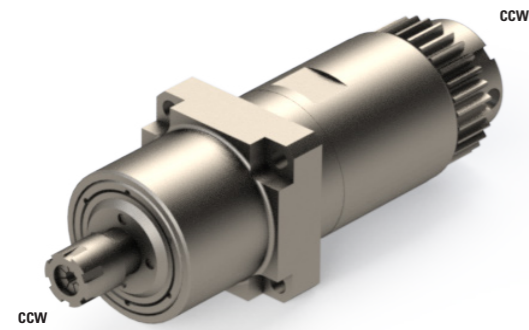
#### Notes



The STAR3-PCR base and GSC007 head are together on this tool.  
Possibility to order them individually.



# ACCELERATED TOOLS STAR MICRONICS.

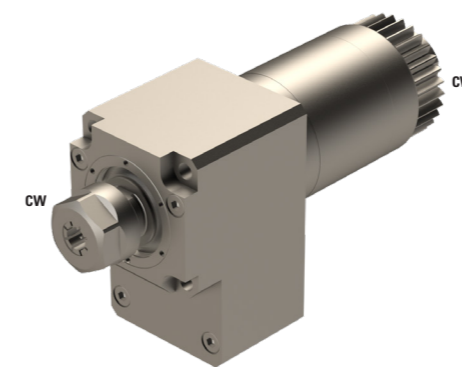
## 0200-SC008-A00A00-1S01





	ER08
	1:3.8
<b>Position</b>	Back tool post
<b>Machines Types</b>	SB-12/20R SR-20J/JN SR-20RIII SR-20RII SR-20RIV SR-32J/JN SR-32JII SV-12 SV-20 SV-32 SV-32JII SV-38R SW-20
<b>Notes</b>	Torque max: 0.2 Nm



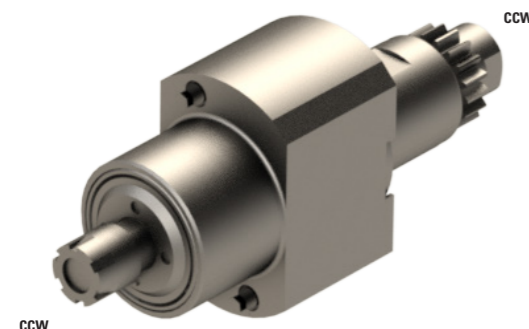
## 0200-SC011-A00A00-1S01




	ER11
	1:2.59
<b>Position</b>	Back gang tool post
<b>Machines Types</b>	ECAS-20T SR-20J SR-20RII SR-20RIV SR-20RIII SV-12 SV-20 SV-32 SV-32J SV-32JN
<b>Notes</b>	RPM max : 14'892.5



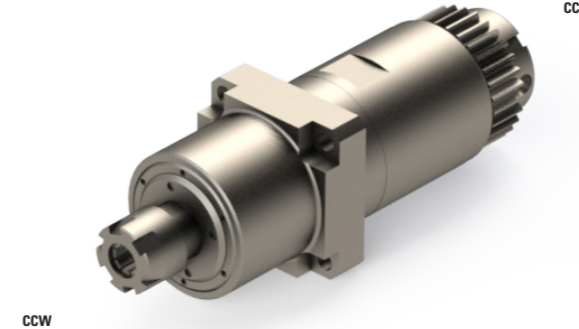
## 0200-SC008-A00A00-1S02





	ER08
	1:3.8
<b>Position</b>	Upper gang tool post
<b>Machines Types</b>	SB12-20R SR-20J/JN SR-20RII SR-20RIII SR-20RIV SR32J/JN SR32JII-A SW-12RII
<b>Notes</b>	Torque max: 0.2 Nm



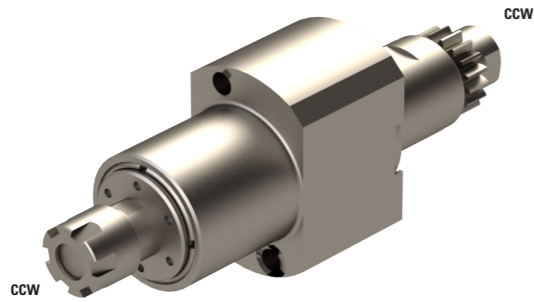
## 0200-SC011-A00A00-1S02





	ER11
	1:3.8
<b>Position</b>	Back gang tool post
<b>Machines Types</b>	SB-12/20R SR-20J/JN SR-20RIII SR-20RII SR-20RIV SR-32J/JN SR-32JII SV-12 SV-20 SV-32 SV-32JII SV-38R SW-20
<b>Notes</b>	Torque max: 0.2 Nm



### 0200-SC011-A00A00-1S03

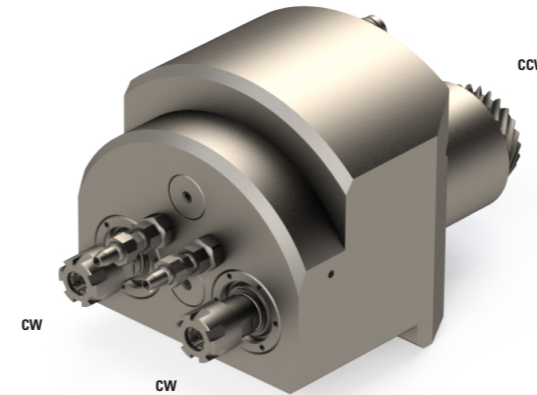



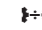
	ER11
	1:3.8
<b>Position</b>	Back tool post
<b>Machines Types</b>	SB-12-20R SB-12/20R SR-10J SR-20J/JN SR-20R/III SR-20R/II SR-20R/IV SR32J/JN SR32J/II-A SW-12R/II

**Notes**  
Torque max: 0.2 Nm



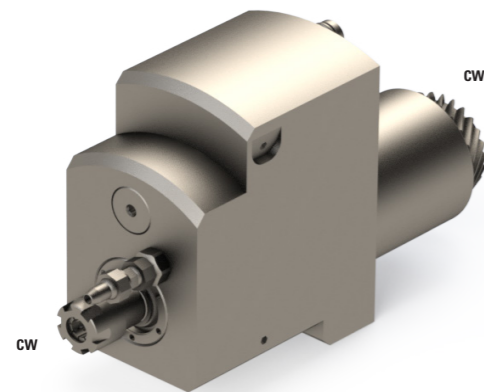
### 0200-SC011-A00AK0-2S01





	2xER11
	1:2.5
<b>Position</b>	Turret
<b>Machines Types</b>	ECAS 20T ST-20 SV-12/20 SV-20 R
<b>Notes</b>	Max pressure 100 [bar]



### 0200-SC011-A00AK0-1S01

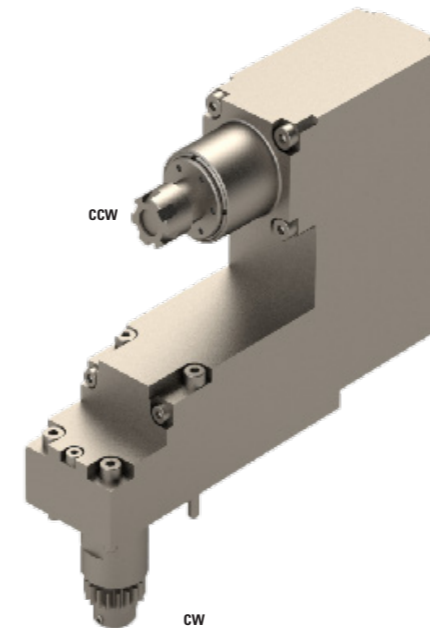




	ER11
	1:2.5
<b>Position</b>	Turret
<b>Machines Types</b>	ECAS 20T ST-20 SV-12/20 SV-20 R

**Notes**  
Max pressure 100 [bar]



### 0200-SC011-R00A00-1S01

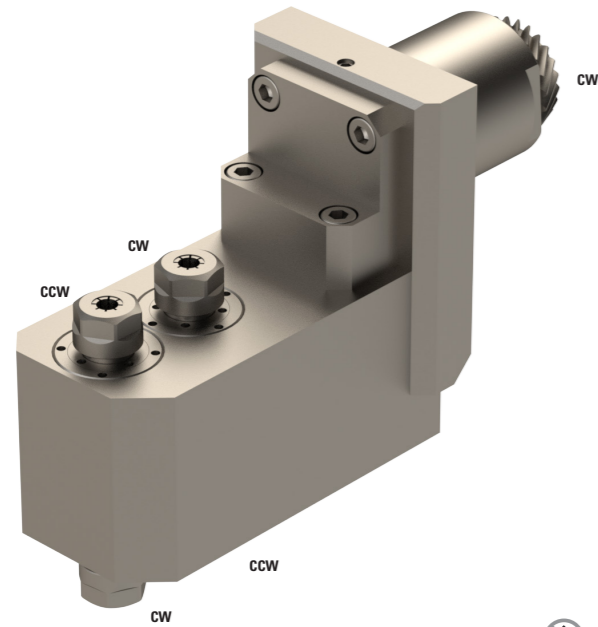




	ER11
	1:3.8
<b>Position</b>	Upper gang tool post
<b>Machines Types</b>	SR-20R-II SR-20J SR-32J SR-38 SW-12R SW-20R

**Notes**  
Article comprising the following 2 elements:  
- 0200-AD000-R00000-1S01  
- 0200-SC011-A00A00-1S02



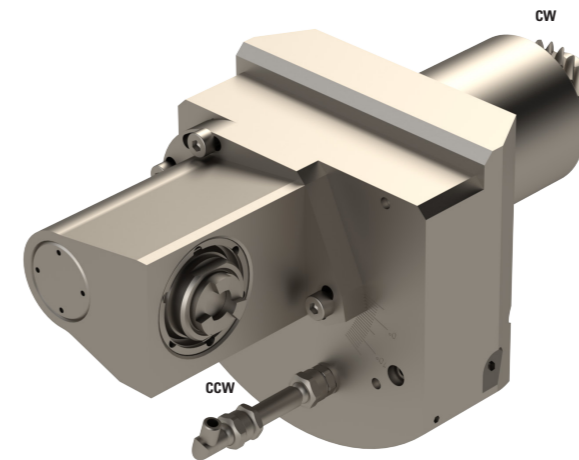
### 0200-SC011-R00A00-2D01





	2xER11+2xER11
	1:4
<b>Position</b>	Turret
<b>Machines Types</b>	ECAS 20T ST-20 SV-12/20 SV-20 R
<b>Notes</b>	



### 0200-SC011-RADAK0-1S01



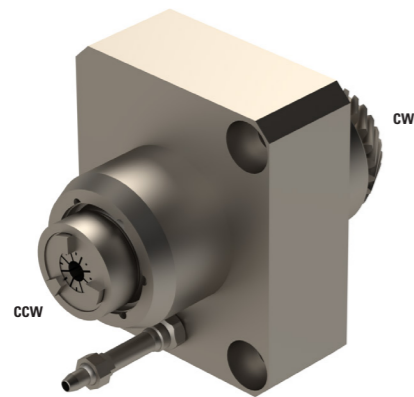
	ER11
	1:2.75
<b>Position</b>	Turret
<b>Machines Types</b>	SV-12 SV-20 SV-20R SV-32JII ST-20 ECAS-20T
<b>Notes</b>	

#### Notes

External, maximum pressure 150 bar  
Adjustable - 5° / +15°  
Max speed (RPM) : 15'675  
Fast setting at 10°



### 0200-SC016-A00A00-1S01



	ER16
	1:2
<b>Position</b>	Turret
<b>Machines Types</b>	SK-51
<b>Notes</b>	

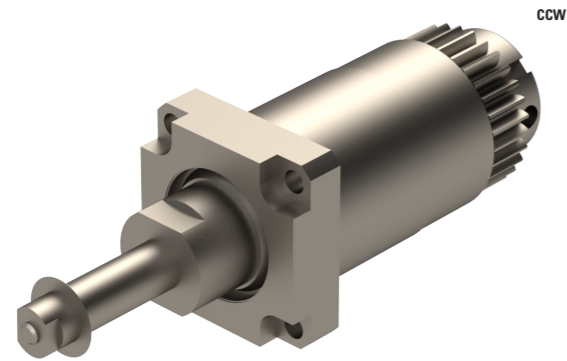
Only for the small square turret with 4 positions.



# SLITTING SAW TOOLS STAR MICRONICS.


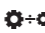


## 0200-SS050-A00000-1S01



CW

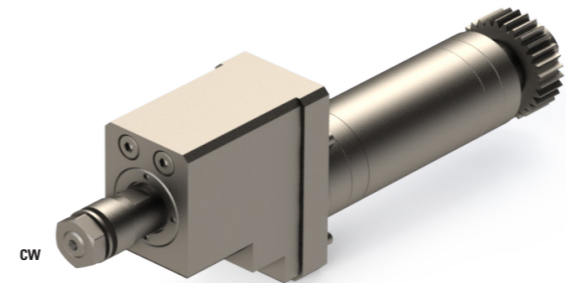
CCW

	Ø5
	2:1
<b>Position</b>	Upper gang tool post
<b>Machines Types</b>	SR-20J/JN
<b>Notes</b>	

Diameter of the mill : Ø50mm max.  
Width of mill cutter : 0.5mm max.





## 0200-SS080-A0D000-1S01



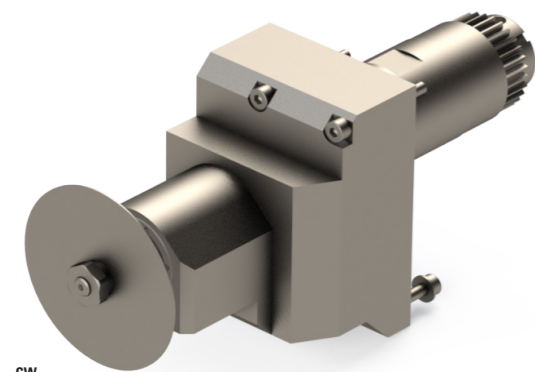
CW

CCW

	8
	1:1
<b>Position</b>	Upper gang tool post
<b>Machines Types</b>	SV-20R
<b>Notes</b>	





## 0200-SS060-A0DR00-1S01



CW

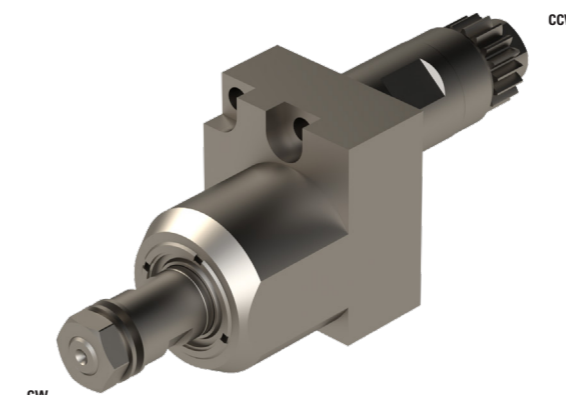
CCW

	Ø6
	2:1
<b>Position</b>	Back gang tool post
<b>Machines Types</b>	SB-12/20R SR-20J/JN SR-20RIII SR-20RII SR-20RIV SR-32J/JN SR-32JII
<b>Notes</b>	

Diameter of the mill : Ø60mm max.  
Width of mill cutter : 0.5mm max.





## 0200-SS080-A0D000-1S02



CW

CCW

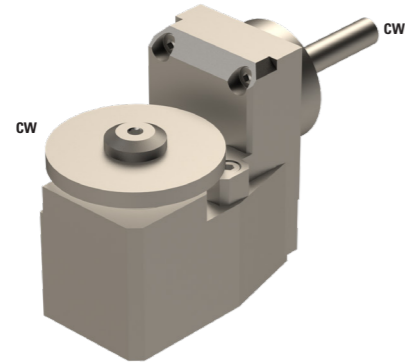
	Ø8
	1:1
<b>Position</b>	Back gang tool post
<b>Machines Types</b>	SL-7/10
<b>Notes</b>	




# POLYGON/ THREADING TOOLS STAR MICRONICS.

POLYGON/THREADING  
TOOLS

## 0200-SP080-RA0000-1S01



	8
---	---

	1:1
---	-----

<b>Position</b>	Back gang tool post
-----------------	---------------------

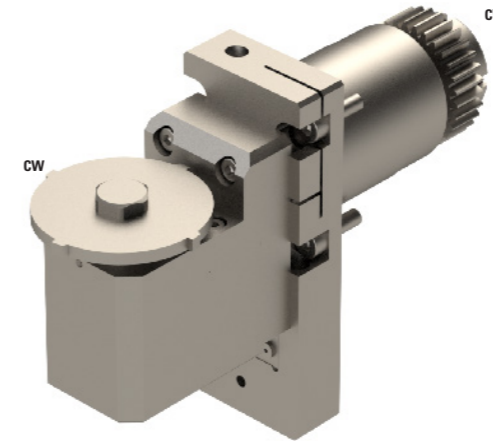
<b>Machines Types</b>	SR10J
-----------------------	-------

**Notes**

This tool can only be used with the STAR bases 0200-BU000-01 or 0200-BU000-02



## 0200-SP080-RA000C-1S02

$\emptyset$	8
-------------	---

	1:1
---	-----

<b>Position</b>	Back gang tool post
-----------------	---------------------

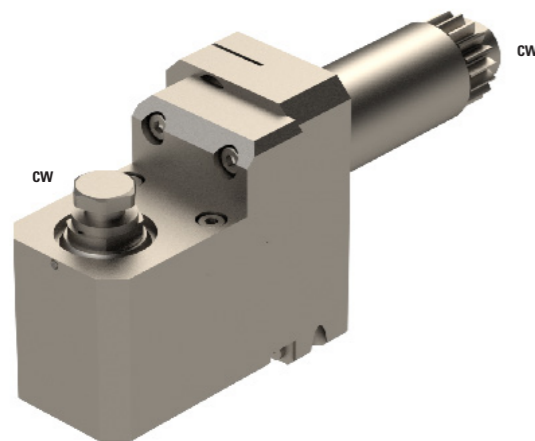
<b>Machines Types</b>	SB-12/16/20R
-----------------------	--------------

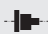
**Notes**

The STAR2-PCR base and GSP-218 head are together on this tool.  
Possibility to order them individually.



## 0200-SP080-RA000C-1S01

	8
---	---

	1:1
---	-----

<b>Position</b>	Upper gang tool post
-----------------	----------------------

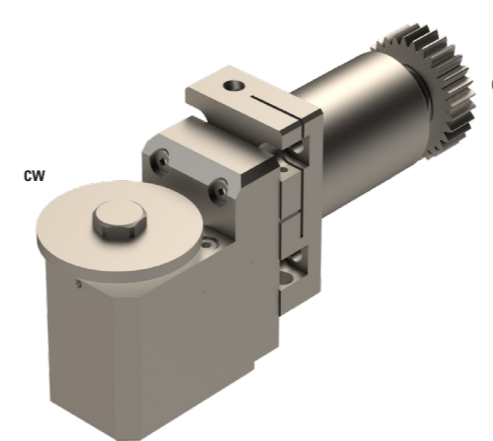
<b>Machines Types</b>	SW12-R11
-----------------------	----------


**Notes**

Ajustable  $\pm 10^\circ$   
The STAR1-PCR base and GSP-218 head are together on this tool.  
Possibility to order them individually.  
Position T800 will be bloqued !



## 0200-SP080-RA000C-1S03

	8
---	---

	1:1
---	-----

<b>Position</b>	Back gang tool post
-----------------	---------------------

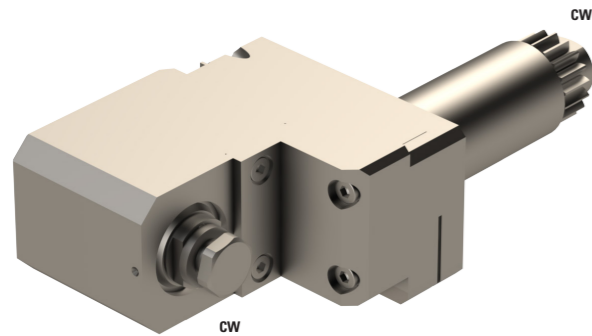
<b>Machines Types</b>	SR20J
-----------------------	-------



**Notes**

Adjustable  $\pm 10^\circ$   
The STAR3-PCR base and GSP-218 head are together on this tool.  
Possibility to order them individually.



## 0200-SP080-RA000C-1S04

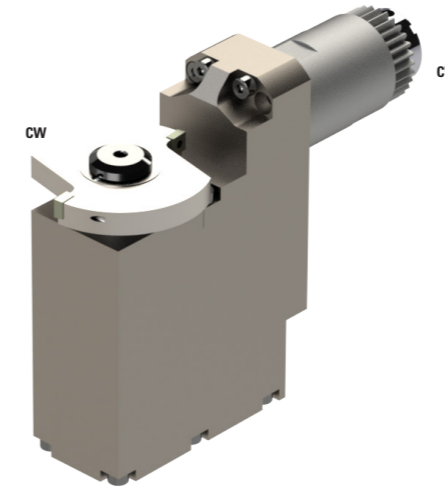
	8
	1:1
<b>Position</b>	Back gang tool post
<b>Machines Types</b>	SL-7/10
<b>Notes</b>	



Ajustable  $\pm 0-1.5^\circ$   
 Diameter of the mil. :  $\varnothing 30-45\text{mm}$  max.  
 Width of mill cutter : 3-6mm max.  
 Polygonizer (also suitable for thread milling)

The STAR4-PCR base and GSP618 head are together on this tool.  
 Possibility to order them individually.



## 0200-SP130-R00000-1S01

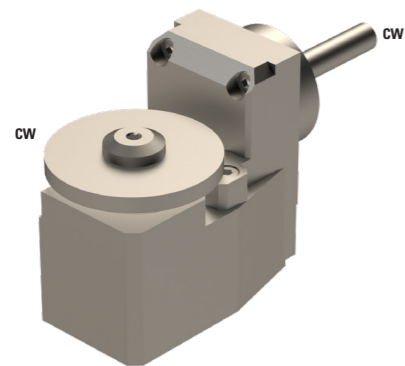




	13
	1:1
<b>Position</b>	Back gang tool post
<b>Machines Types</b>	SR20RII
<b>Notes</b>	

Diameter of the mill :  $\varnothing 60\text{mm}$  max.  
 Width of mill cutter : 8.3mm max.



## 0200-SP100-RA0000-1S01

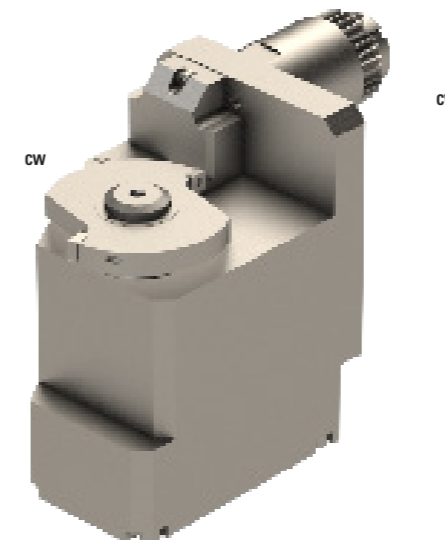




	10
	1:1
<b>Position</b>	Back gang tool post
<b>Machines Types</b>	SR10J
<b>Notes</b>	

This tool can only be used with the STAR bases 0200-BU000-01 or 0200-BU000-02.



## 0200-SP130-R00R00-1S01



	13
	8:3
<b>Position</b>	Back gang tool post
<b>Machines Types</b>	
<b>Notes</b>	

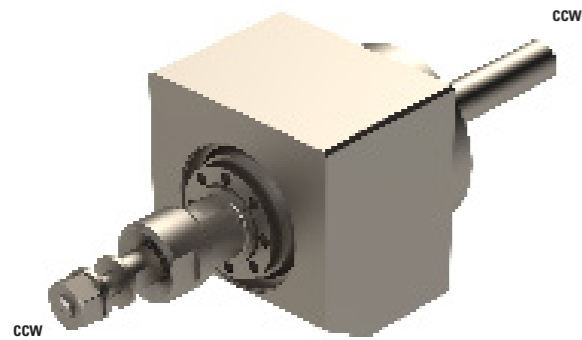
SR-20J/JN  
 SR-20JII  
 SR-20RII  
 SR-20RIII  
 SR-20RIV  
 SR-32J/JN  
 SR-32JII  
 SR-38


Diameter of the mill :  $\varnothing 60\text{mm}$  max.  
 Width of mill cutter : 8.3mm max.



# HOBGING TOOLS STAR MICRONICS.

## 0200-SH035-A0000-1S01



	3.5
---	-----

	1:1
---	-----

<b>Position</b>	Back gang tool post
-----------------	---------------------

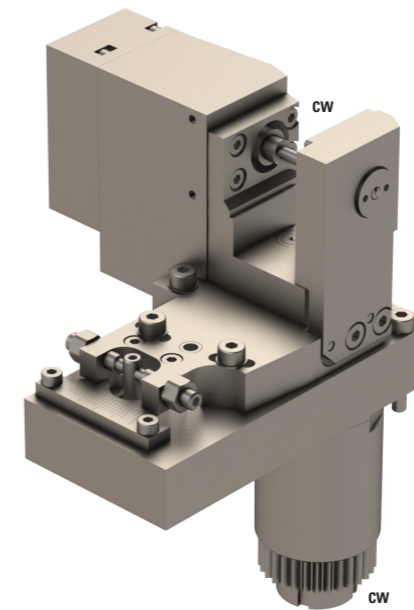
<b>Machines Types</b>	SR-10J
-----------------------	--------


**Notes**

Diameter of the mill : Ø8-10mm  
Width of mill cutter : 4-6mm  
This tool can only be used with the STAR bases 0200-BU000-01 or 0200-BU000-02.



## 0200-SH035-RA0000-1S01



	3.5
---	-----

	1:1
---	-----

<b>Position</b>	Upper gang tool post
-----------------	----------------------

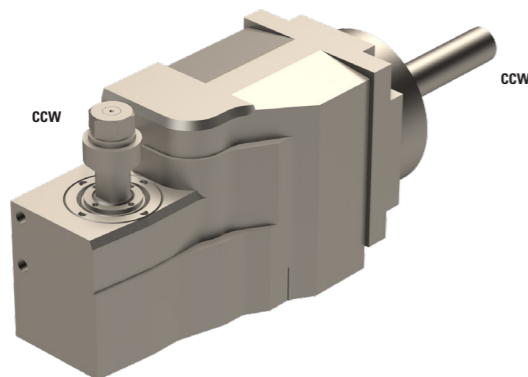
<b>Machines Types</b>	SB12-20R SR-20J-JN SR-20RIII SR-20RII SR-20RIV
-----------------------	--


**Notes**

Adjustable  $\pm 5^\circ$   
Diameter of the mill : Ø 10mm  
Width of mill cutter : 5mm



## 0200-SH035-R0000-1S01



	4.5
---	-----

	1:1
---	-----

<b>Position</b>	Back gang tool post
-----------------	---------------------

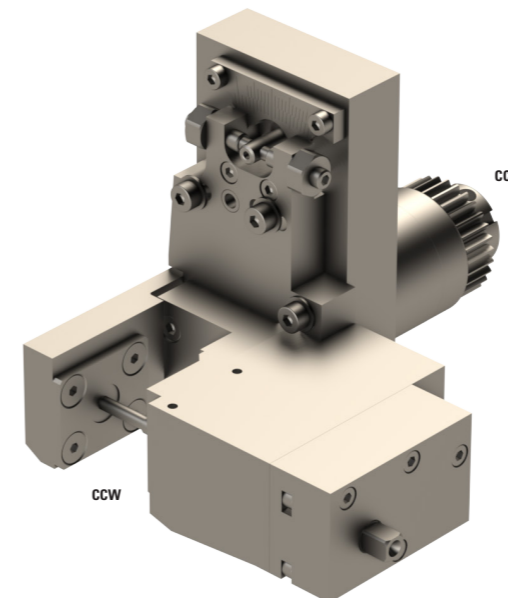
<b>Machines Types</b>	SR10J
-----------------------	-------


**Notes**

Diameter of the mill : Ø8-10mm  
Width of mill cutter : 4-6mm  
This tool can only be used with the STAR bases 0200-BU000-01 or 0200-BU000-02.



## 0200-SH035-RA0000-1S02



	3.5 mm / 4.5 mm
---	-----------------

	1:1
---	-----

<b>Position</b>	Upper gang tool post
-----------------	----------------------

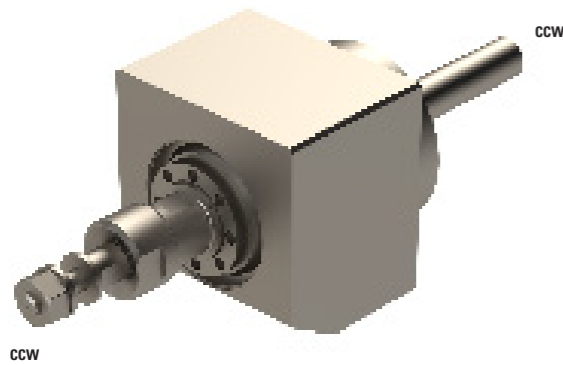
<b>Machines Types</b>	SB12-20R SR-20J-JN SR-20RIII SR-20RII SR-20RIV
-----------------------	--



**Notes**

Adjustable  $\pm 5^\circ$   
Diameter of the mill : Ø 10mm  
Width of mill cutter : 5mm



### 0200-SH040-A00000-1S01



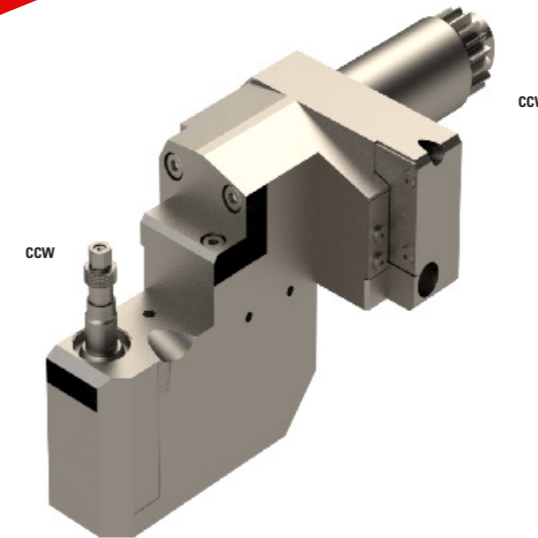
	4
	1:1
<b>Position</b>	Back gang tool post
<b>Machines Types</b>	SR10J
<b>Notes</b>	



This tool can only be used with the STAR bases 0200-BU000-01 or 0200-BU000-02.



### 0200-SH045-RA000C-1S01

**MODULAR SYSTEM**

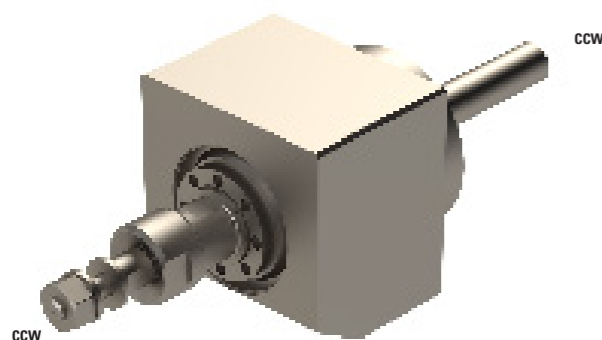




	3.5/4.5 mm
	1:1
<b>Position</b>	Upper gang tool post
<b>Machines Types</b>	SW12-RII
<b>Notes</b>	

Ajustable  $\pm 15^\circ$  -  $3^\circ$   
 Position T800 will be bloqued  
 Diameter of the mill :  $\varnothing 8$ -12mm  
 Width of mill cutter : 4-5-6-8mm  
 The STAR1-PCR base and GSH045 head are together on this tool.  
 Possibility to order them individually.



### 0200-SH045-A00000-1S01



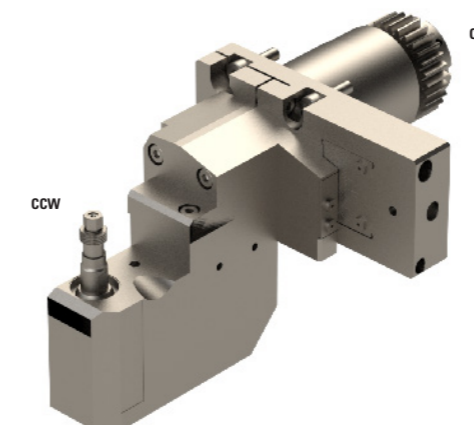
	4.5
	1:1
<b>Position</b>	Back gang tool post
<b>Machines Types</b>	SR10J
<b>Notes</b>	


Diameter of the mill :  $\varnothing 10$ -12mm  
 Width of mill cutter : 5-6-8mm  
 This tool can only be used with the STAR bases 0200-BU000-01 or 0200-BU000-02.



### 0200-SH045-RA000C-1S02

**MODULAR SYSTEM**



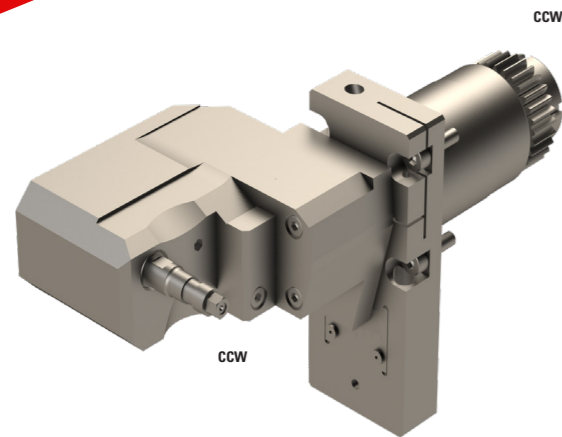
$\varnothing$	4.5
	1:1
<b>Position</b>	Back gang tool post
<b>Machines Types</b>	SB-12/16/20R SR-20R SR-20J SR-32J
<b>Notes</b>	



Width of mill cutter : 8mm max.  
 Adjustable :  $-3^\circ$ .. $+10^\circ$   
 The STAR2-PCR base and GSH-045 head are together on this tool.  
 Possibility to order them individually.



## 0200-SH045-RA000C-1S03

MODULAR  
SYSTEM



	3.5/4.5mm
	1:1
<b>Position</b>	Back gang tool post
<b>Machines Types</b>	SB-12/20R SR-20J/JN

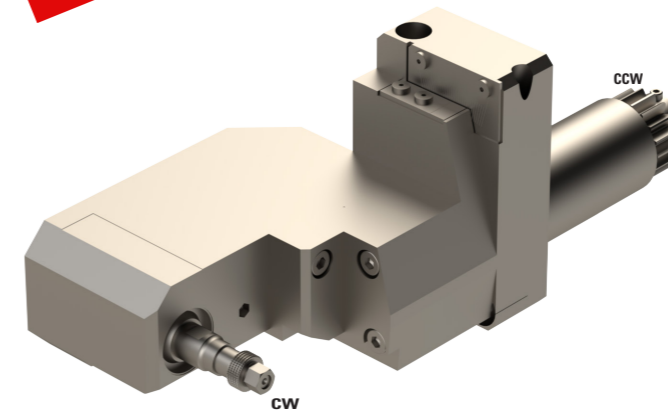
### Notes



Diameter of the mill : Ø 8-10-12mm  
Width of mill cutter : 4-5-6-8mm  
The STAR2-PCR base and GSH145 head are together on this tool.  
Possibility to order them individually.



## 0200-SH045-RA000C-1S05

MODULAR  
SYSTEM



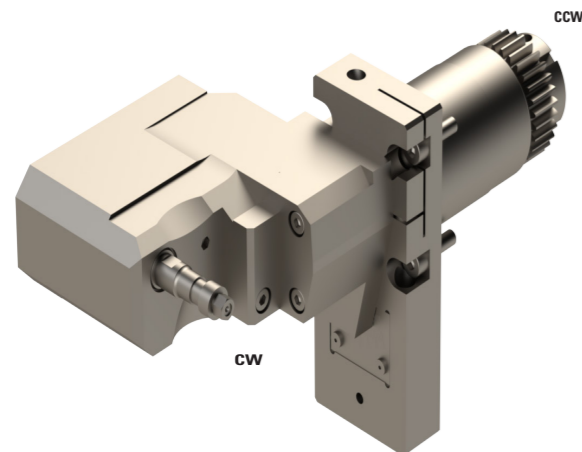
	3.5/4.5mm
	1:1
<b>Position</b>	Upper gang tool post
<b>Machines Types</b>	SL-7/SL-10



### Notes

Adjustable +15°/-3°  
Diameter of the mill : Ø8-12 mm  
Width of mill cutter : 3-4 mm  
The STAR4-PCR base and GSH345 head are together on this tool.  
Possibility to order them individually.



## 0200-SH045-RA000C-1S04



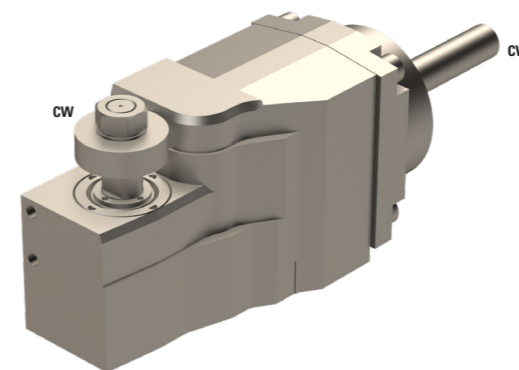
	3.5/4.5mm
	1:1
<b>Position</b>	Upper gang tool post
<b>Machines Types</b>	SW20



### Notes

Adjustable +15°/-3°  
Diameter of the mill : Ø8-10-12mm  
Width of mill cutter : 4-5-6-8mm



## 0200-SH050-R00000-1S01



	5
	1:1
<b>Position</b>	Back gang tool post
<b>Machines Types</b>	SR10J

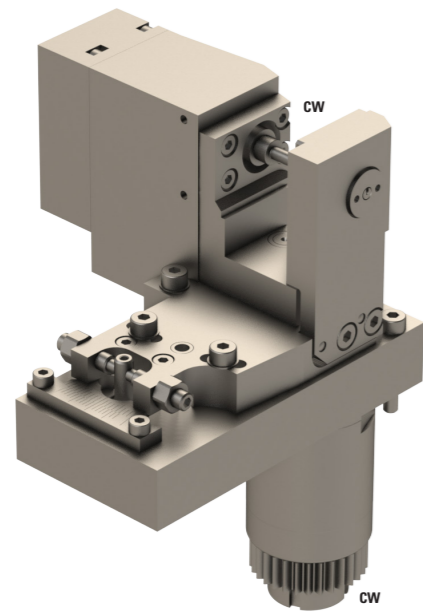
### Notes



Diameter of the mill : Ø12mm  
Width of mill cutter : 6-8mm  
This tool can only be used with the STAR bases 0200-BU000-01 or 0200-BU000-02





## 0200-SH080-R0000-1S01



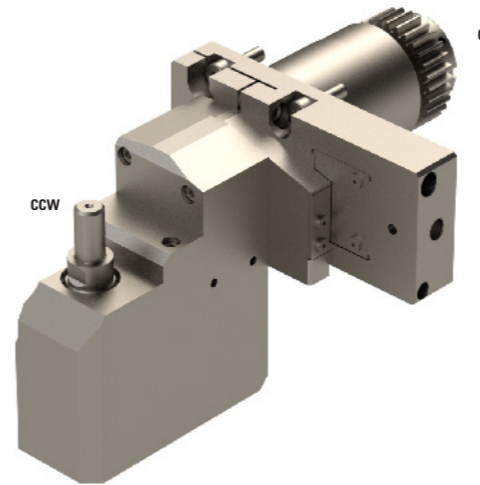
	8
	1:1
<b>Position</b>	Upper gang tool post
<b>Machines Types</b>	SB12-20R SR-20J-JN SR-20RIII SR-20RII SR-20RIV


**Notes**

Adjustable  $\pm 5^\circ$   
Diameter of the mill :  $\varnothing 24\text{mm}$   
Width of mill cutter : 13mm



## 0200-SH080-RA000C-1S02

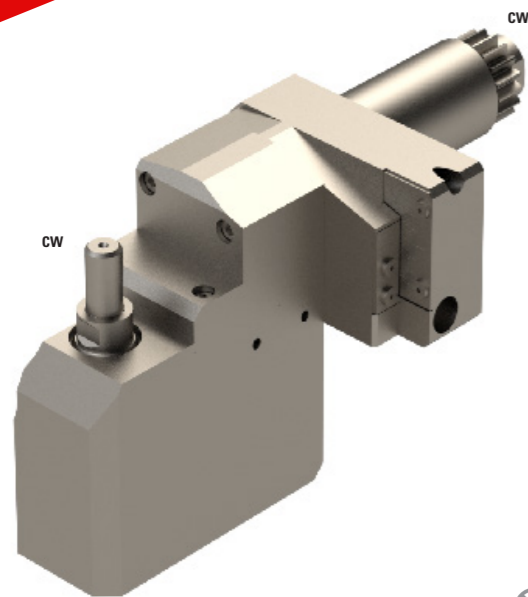
$\varnothing$	8
	1:1
<b>Position</b>	Back gang tool post
<b>Machines Types</b>	SB-12/16/20R SR-20R SR-20J SR-32J


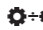
**Notes**

Width of mill cutter : 8mm max.  
Adjustable :  $-3..+10^\circ$   
The STAR2-PCR base and GSH-080 head are together on this tool.  
Possibility to order them individually.



## 0200-SH080-RA000C-1S01

	8
	1:1
<b>Position</b>	Upper gang tool post
<b>Machines Types</b>	SW-12RII

**Notes**

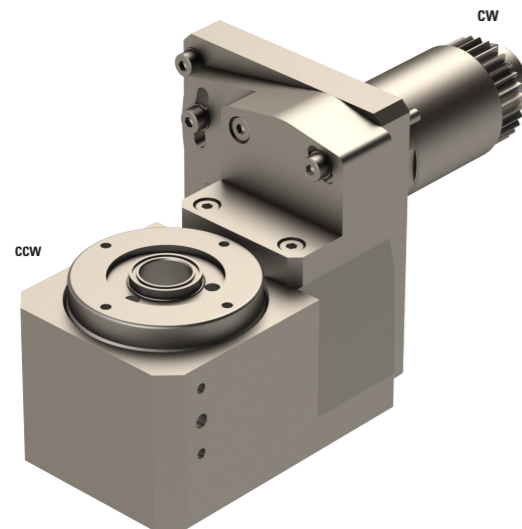
Adjustable  $+10^\circ/-3^\circ$   
Diameter of the mill :  $\varnothing 8-16\text{mm}$   
Width of mill cutter : 6-8mm  
The STAR1-PCR base and GSH080 head are together on this tool.  
Possibility to order them individually.  
Position T800 will be bloqued


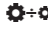


# WHIRLING TOOLS STAR MICRONICS.

WHIRLING  
TOOLS

## 0200-SW010-RA0000-1S01



	-
	1:1
<b>Position</b>	Back gang tool post
<b>Machines Types</b>	SB-12/20R SR-20RIV SR-20J/JN SR-32J/JN SR-20RII SR-32JII SR-20RIII SW-20

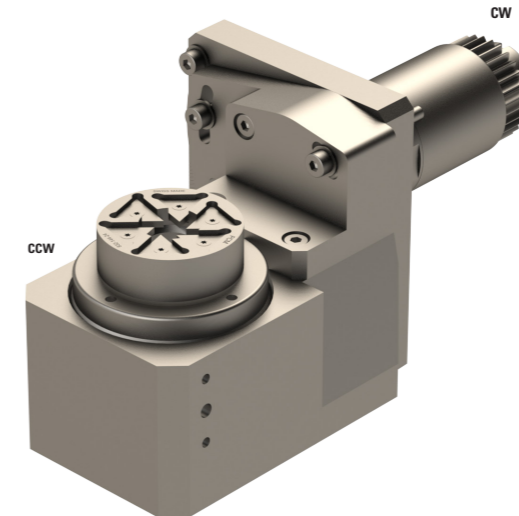
**Notes**



Adjustable  $\pm 10^\circ$   
Thread whirling ring not included!  
ADDITIONAL ARTICLES :  
501-0003  
GLOOR Thread whirling ring  
Z=5  $\varnothing 6$  mm

W03060511114  
SCHWANOG Thread whirling ring  
Z=5  $\varnothing 6$  mm



## 0200-SW010-RA0000-1S03



	-
	1:1
<b>Position</b>	Back gang tool post
<b>Machines Types</b>	SB-12/20R SR-20RIV SR-20J/JN SR-32J/JN SR-20RII SR-32JII SR-20RIII SW-20

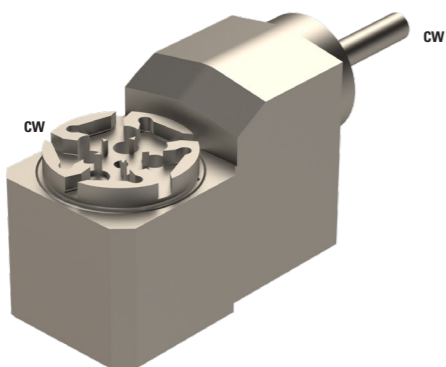
**Notes**

Adjustable  $\pm 10^\circ$   
Thread whirling ring included !

ADDITIONAL ARTICLES:  
W03060511114  
SCHWANOG Thread whirling ring  
Z=5  $\varnothing 6$  mm



## 0200-SW010-RA0000-1S02



	-
	1:1
<b>Position</b>	Back gang tool post
<b>Machines Types</b>	SR10J

**Notes**

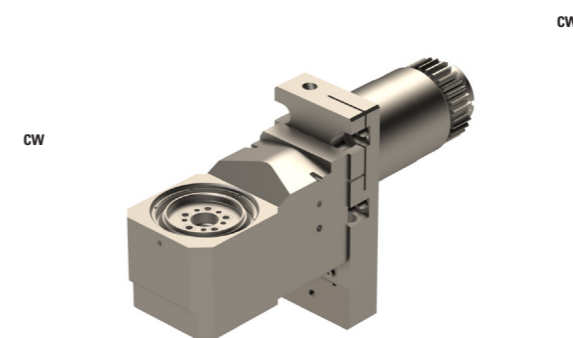
Adjustable  $\pm 10^\circ$   
This tool can only be used with the STAR bases 0200-BU000-01 or 0200-BU000-02  
The maximum diameter is  $\varnothing 6$ mm.



Thread whirling ring not included!  
ADDITIONAL ARTICLES :  
W03060511111  
SCHWANOG Thread whirling ring  
Z=5  $\varnothing 6$ mm

W04060611111  
UTILIS Thread whirling ring  
Z=6  $\varnothing 6$  mm



## 0200-SW010-RA0000-1S04



	-
	1:1
<b>Position</b>	Upper gang tool post
<b>Machines Types</b>	SB-12/20R, SR-20J/JN SR-20RII, SR-20RII SR20-RIV, SR-32J/JN SR-32JII, SW-20

**Notes**

Adjustable  $\pm 10^\circ$   
The maximum diameter is  $\varnothing 6$ mm.  
Thread whirling ring not included !

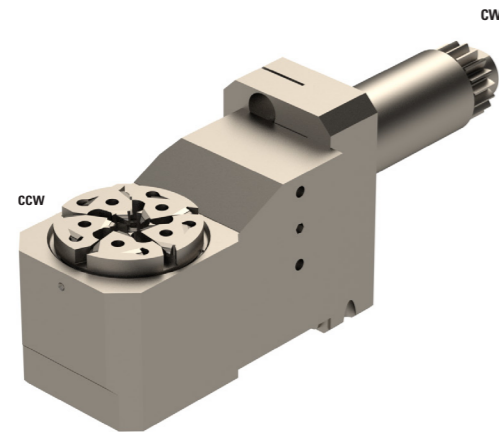
ADDITIONAL ARTICLES :  
W03060511111  
SCHWANOG Thread whirling ring  
Z=5  $\varnothing 6$  mm


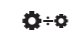
W04060611111  
UTILIS Thread whirling ring  
Z=6  $\varnothing 6$  mm





## 0200-SW010-RA000C-1S01



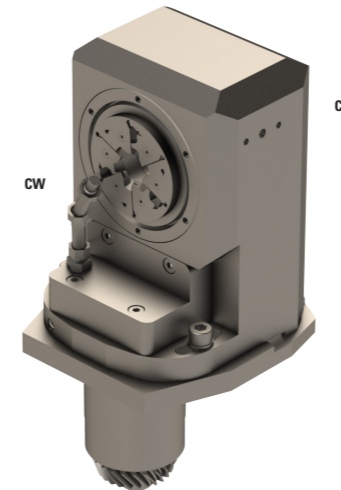
	-
	1:1
<b>Position</b>	Upper gang tool post
<b>Machines Types</b>	SB-12/20R SR-20RIV SR-20J/JN SR-32J/JN SR-20RII SR-32JII SR-20RIII SW-12



**Notes**

Adjustable  $\pm 10^\circ$   
The STAR1-PCR base and GSW-210 head are together on this tool. Possibility to order them individually.  
Thread whirling ring not included!  
ADDITIONAL ARTICLES :  
501-0003  
GLOOR Thread whirling ring  
Z=5  $\varnothing 6$  mm  
  
W03060511114  
SCHWANOG Thread whirling ring  
Z=5  $\varnothing 6$  mm



## 0200-SW015-RA00K0-1S01



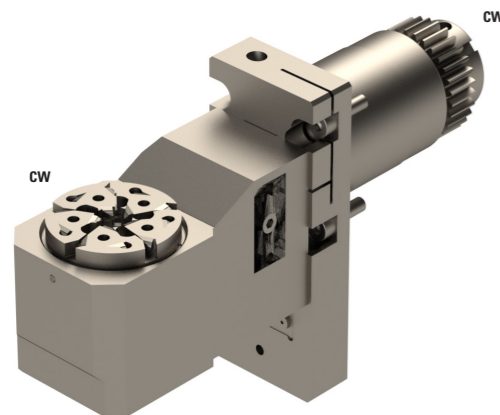
	-
	1:1
<b>Position</b>	Turret
<b>Machines Types</b>	ECAS 20T ST-20 SV-12/20 SV-20 R


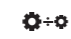
**Notes**

RPM max : 5'750  
Use 2 locations  
Adjustable  $\pm 15^\circ$   
Thread Whirling ring not included!  
ADDITIONAL ARTICLES :  
Art. W03120611116  
SCHWANOG Thread Whirling ring Z=6  $\varnothing 12$  mm  
Art. SV20-W15-FPUTI  
UTILIS Thread Whirling ring Z=9  $\varnothing 8$  mm




## 0200-SW010-RA000C-1S02



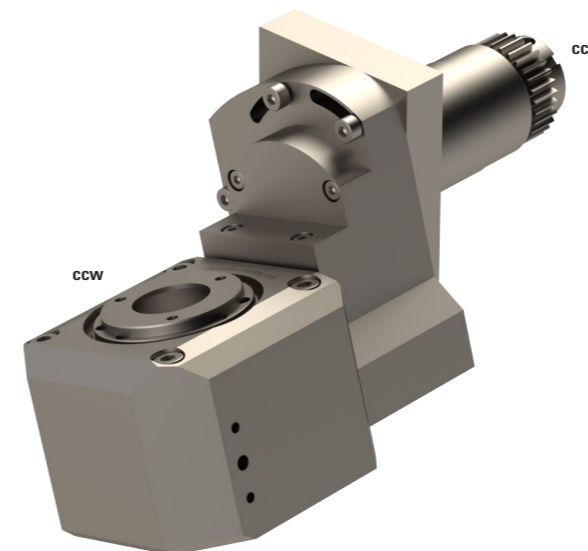
	-
	1:1
<b>Position</b>	Back gang tool post
<b>Machines Types</b>	SB-12/20R SR20-RIV SR-20J/JN SR-32J/JN SR-20RIII SR-32JII SR-20RII SW-20



**Notes**

The STAR2-PCR base and GSW-210 head are together on this tool.  
Adjustable  $\pm 10^\circ$   
The maximum diameter is  $\varnothing 6$ mm.  
Thread whirling ring not included !  
W03060511111 / SCHWANOG Thread whirling ring  
Z=5  $\varnothing 6$  mm  
W04060611111 / UTILIS Thread whirling ring  
Z=6  $\varnothing 6$  mm



## 0200-SW016-RA0000-1S01



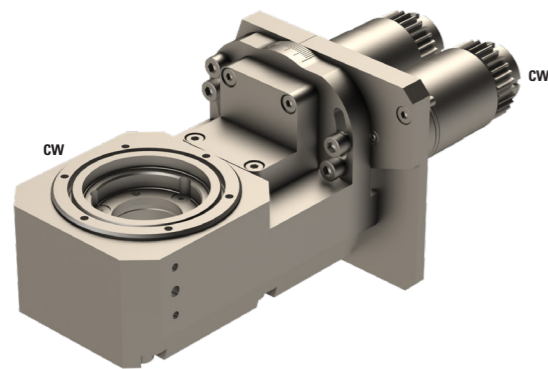
	-
	1:1
<b>Position</b>	Back gang tool post
<b>Machines Types</b>	SR-20J/JN/JII-A SR-32J/JN/JII-A/JII-B SR-20RII SR-20RIII



**Notes**

Adjustable  $\pm 16^\circ$   
There is a need for an oil filtered at 50 $\mu$ m.  
More information on our website.



## 0200-SW020-RA0000-1S01



	-
	1:1
<b>Position</b>	Back gang tool post
<b>Machines Types</b>	ECAS-12/20    SR-20RIII SB-12/20R    SR-32JJN SR-20J/JN    SW-20 SR-20RII

**Notes**

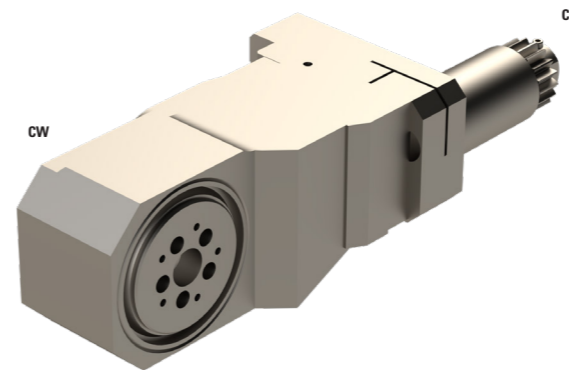
Adjustable  $\pm 20^\circ$   
2 tool positions are required



Thread whirling ring not included !  
ADDITIONAL ARTICLES :  
W03120611117 SCHWANOG Thread whirling ring  
Z=6  $\varnothing 12$  mm

SV20-W15-FPUTI UTILIS Thread whirling ring  
Z=9  $\varnothing 12$  mm



## 0200-SW020-RA000C-1S01

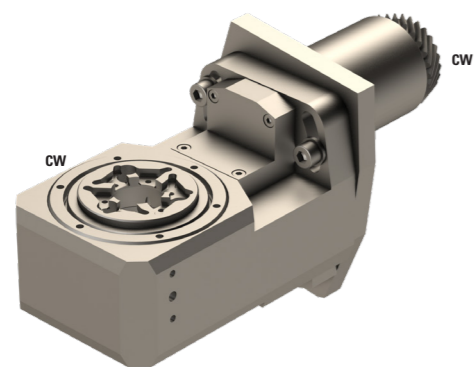
	-
	1:1
<b>Position</b>	Upper gang tool post
<b>Machines Types</b>	SW12-R-II


**Notes**

ATTENTION, new version, old thread whirling rings are not compatible!  
Thread whirling ring not included!  
Please note that the maximum thread diameter is limited by the inclination of the cutter head and the thread depth. See document «Machining capacity GSW-220»  
More information on our website.



## 0200-SW020-RA0000-1S02



	-
	1:1
<b>Position</b>	Turret
<b>Machines Types</b>	SV-32

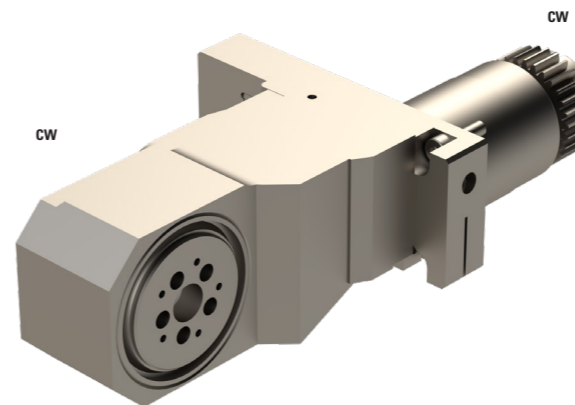
**Notes**



RPM max : 5'900  
Adjustable  $\pm 20^\circ$   
Thread Whirling ring not included!  
ADDITIONAL ARTICLES :  
W03120611117  
SCHWANOG Thread Whirling ring  
Z=6  $\varnothing 12$  mm

SV20-W15-FPUTI  
UTILIS Thread Whirling ring  
Z=9  $\varnothing 8$  mm



## 0200-SW020-RA000C-1S02

	-
	1:1
<b>Position</b>	Back gang tool post
<b>Machines Types</b>	SB-12/20R    SR-20RIII SR-20J/JN    SR-32JJN SR-20RII

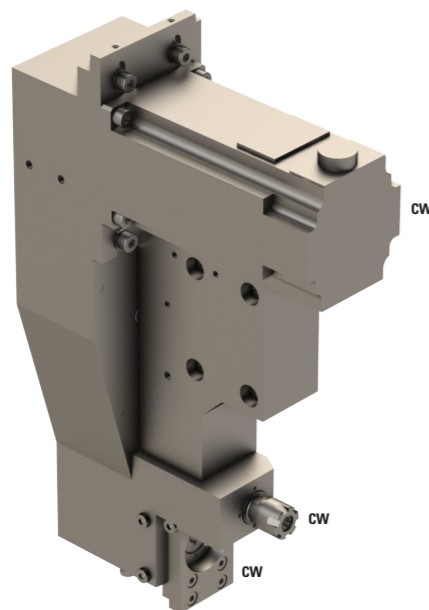
**Notes**


Adjustable  $\pm 20^\circ$   
ATTENTION, new version, old thread whirling rings are not compatible!  
Thread whirling ring not included!  
Please note that the maximum thread diameter is limited by the inclination of the cutter head and the thread depth. See document «Machining capacity GSW-220»  
More information on our website.



# STATICS TOOLS STAR MICRONICS.

## 0200-BU000-01



	ER11 + Ø8
---	-----------

	1:1.66
---	--------

<b>Position</b>	Upper gang tool post
-----------------	----------------------

<b>Machines Types</b>	SR10J
-----------------------	-------

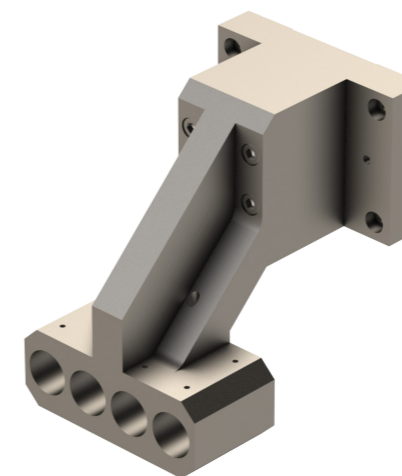
**Notes**


RPM max : 13'328  
Interchangeable tool holders (Possibility to order them individually):  
SR10J-GSC-E08  
SR10J-GSC-E11-2x  
SR10J-GSC-E11-2x-DEC  
SR10J-GSF-080-II  
SR10J-GSF-100-11  
SR10J-GSH-035  
SR10J-GSH-035-II-L  
SR10J-GSH-050-II  
SR10J-GSW-010

Original main block is to replace by this tool. To adjust the offset please contact your local Star Micronics dealer.  
Tool N°3100 are losted.  
Tool N°3200 in ER11 with RPM 13'328.  
Tool N°3300 is a modular quick change for different operation.  
Same construction as the 0200-BU000-01.



## 0200-DF220-R00000-4S01



	4xØ22 H6 mm
---	-------------

	-
---	---

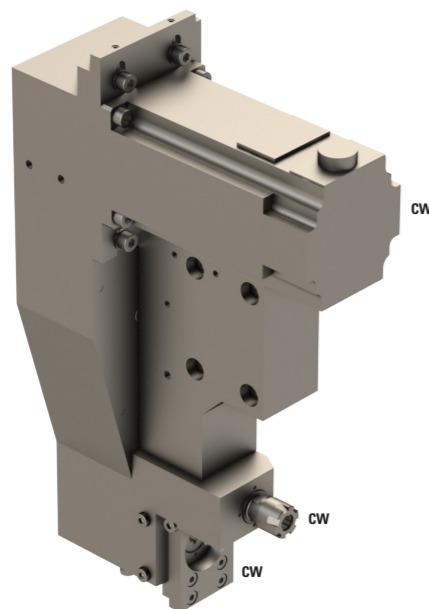
<b>Machines Types</b>	SR-20RII
-----------------------	----------


**Notes**


Fourfold boring bar holder



## 0200-BU000-02



	ER11 + Ø8
---	-----------

	1:1.66
---	--------

<b>Position</b>	Upper gang tool post
-----------------	----------------------

<b>Machines Types</b>	SR10J
-----------------------	-------

**Notes**


RPM max : 13'328  
Interchangeable tool holders (Possibility to order them individually):  
SR10J-GSC-E08  
SR10J-GSC-E11-2x  
SR10J-GSC-E11-2x-DEC  
SR10J-GSF-080-II  
SR10J-GSF-100-11  
SR10J-GSH-035  
SR10J-GSH-035-II-L  
SR10J-GSH-050-II  
SR10J-GSW-010

Original main block is to replace by this tool. To adjust the offset please contact your local Star Micronics dealer.  
Tool N°3100 are losted.  
Tool N°3200 in ER11 with RPM 13'328.  
Tool N°3300 is a modular quick change for different operation.  
Same construction as the 0200-BU000-01.  
The main block is 10 mm longer.



## 0200-DF220-R000H0-1S01



	1xØ22
---	-------

	-
---	---

<b>Machines Types</b>	ST-20 SV-12 SV-20 SV20-R SV-38R
-----------------------	---


**Notes**

Max pressure : 120 [bar]  
Length tool : 105mm



### 0200-DF220-R000H0-1S02



 1xØ22

 -

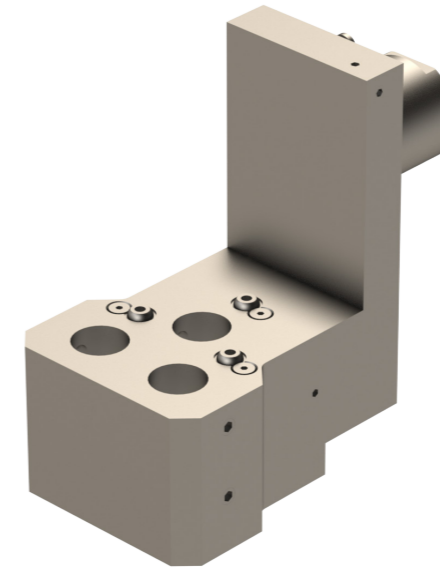
**Machines Types**  
ST-20  
SV-12  
SV-20  
SV20-R  
SV-38R


**Notes**

Length tool : 105mm  
Height: 90mm



### 0200-DF220-R000H0-3S01



 3xØ22H7

 -

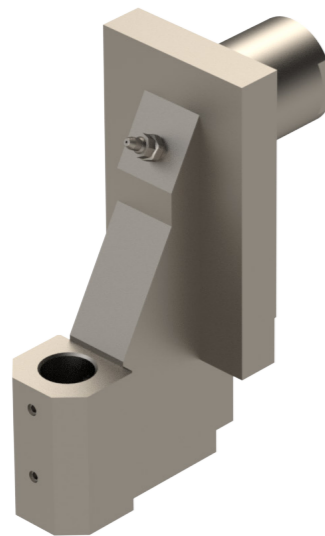
**Machines Types** SV-20


**Notes**

Maximum pressure : 150 [bar]



### 0200-DF250-R000H0-1S01



 1xØ25mm

 -

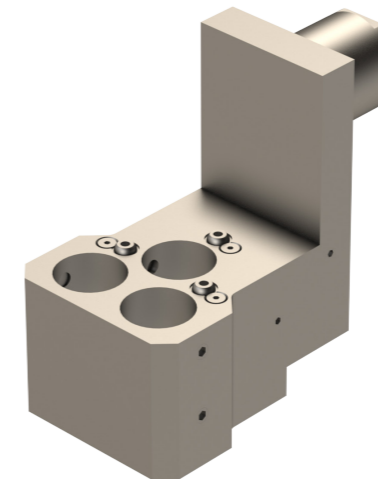
**Machines Types**  
ST-20  
SV-12  
SV-20  
SV20-R  
SV-38R


**Notes**

Length tool : 105mm



### 0200-DF320-R000H0-3S01



 3xØ32H7

 -

**Machines Types**  
ST-20  
SV-12  
SV-20  
SV-20R  
SV-38R

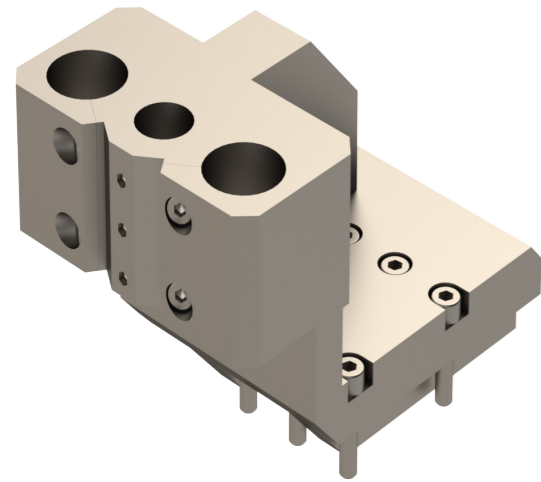
**Notes**

Maximum pressure : 150 [bar]





## 0200-HF220-R00000-3S01



■ 1xØ16 et 2xØ22

⚙️ -

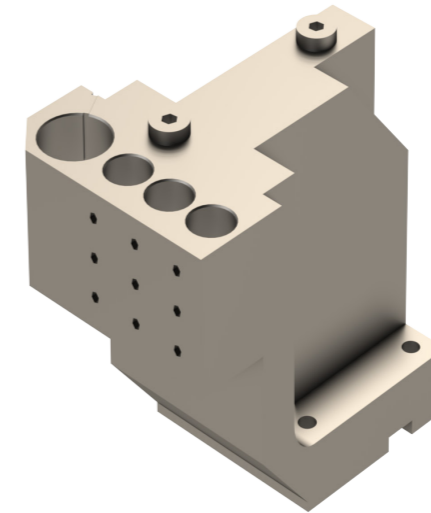
**Machines Types** SW12

**Notes**

Attaches to Cutter carrier holder 0200-TF100-A00000-3S01



## 0200-HF200-R00000-4S01



■ 3xØ16 et 1xØ25 HF

**Position** Back gang tool post

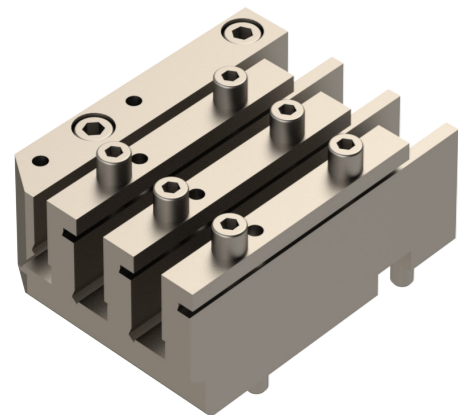
**Machines Types** SW12

**Notes**

Replace the original boring bar holder



## 0200-TF100-A00000-3S01



☑️ 3x10

⚙️ -

**Machines Types** SW12

**Notes**

Possibility to fix a HF spindle holder 0200-HF220-R00000-3S01





Lined writing area for page 66.



Lined writing area for page 67.

Visit us online :  
[www.pcm.ch](http://www.pcm.ch)



**PCM Precision Tooling SA**

Route du Grammont 101  
1844 Villeneuve  
Switzerland

Tél. +41 (0)21 967 33 66  
sales@pcm.ch